



I See **THE FUTURE**  
of Medical Imaging



[www.icrcompany.com](http://www.icrcompany.com)





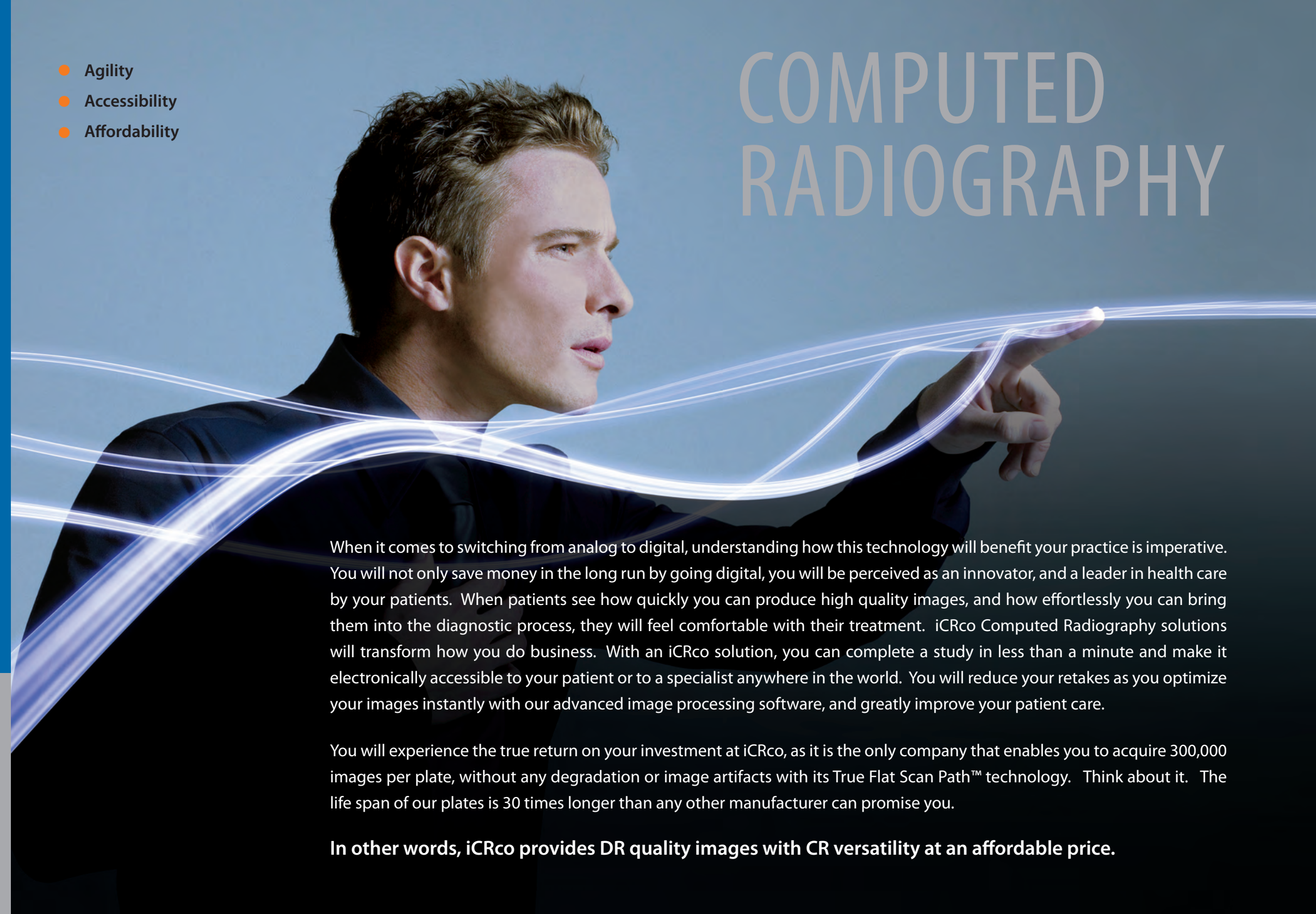
**Stephen Neushul** saw the future when he first designed a film scanner back in 1990 called the OmniMedia scanner. He built the scanner with a fixed light source, an innovation at the time that soon gained industry notoriety. Stephen invented technologies that changed how digital radiology works. And when challenged to come up with a better and more efficient new film scanner design after starting his own company, he did! Following his successful line of film digitizers, Stephen focused on the Computed Radiography world. After years of research, planning, and prototypes, Stephen introduced the True Flat Scan Path™ technology in 2003 — Another innovation available from iCRco. Since the early days, iCRco has become a leader in digital radiology technologies. With the addition of PACS and advanced image management software, iCRco is a complete solution provider for all digital imaging needs. At iCRco, we thrive as a pioneer with a focus on the future.

US

In search of the next innovation that will shake up the industry, Stephen continually creates prototypes for new ideas. To this day, he is the head engineer at iCRco and relentlessly motivates his team to see the future.

- Agility
- Accessibility
- Affordability

# COMPUTED RADIOGRAPHY



When it comes to switching from analog to digital, understanding how this technology will benefit your practice is imperative. You will not only save money in the long run by going digital, you will be perceived as an innovator, and a leader in health care by your patients. When patients see how quickly you can produce high quality images, and how effortlessly you can bring them into the diagnostic process, they will feel comfortable with their treatment. iCRco Computed Radiography solutions will transform how you do business. With an iCRco solution, you can complete a study in less than a minute and make it electronically accessible to your patient or to a specialist anywhere in the world. You will reduce your retakes as you optimize your images instantly with our advanced image processing software, and greatly improve your patient care.

You will experience the true return on your investment at iCRco, as it is the only company that enables you to acquire 300,000 images per plate, without any degradation or image artifacts with its True Flat Scan Path™ technology. Think about it. The life span of our plates is 30 times longer than any other manufacturer can promise you.

**In other words, iCRco provides DR quality images with CR versatility at an affordable price.**



# DIRECT DIGITAL RADIOGRAPHY

- Original
- Distinctive
- Imaginative

With iCRco's direct digital solution, iDR, you no longer handle cassettes. iDR is fixed in your exam room and has a sealed scan head technology. Unlike other DR systems available today, iDR can be completely integrated to your existing Rad Room, costing much less than other DR products. iDR streamlines your workflow because it is simple to use and fast. It can be on a u-arm, bolted to a wall stand or located inside a table. What separates this DR from others? It has been designed with an easily swappable opto-electronic module to ensure maximum uptime in the field.

#### See Your Future:

It is time to advance yourself and rid your practice from chemicals and film, to gain the competitive edge for success in the new age of X-ray imaging.

Regardless of the size of your practice, iCRco digital solutions are a cost effective way to transition you to the new age of medical imaging. With exceptional diagnostic quality, increased productivity, and better patient care, we are here to provide you with solutions that give you a true competitive edge.

- Inspiration
- Innovation
- Implementation

## LONG BONE *i*DR

Staying true to our inspiration of transforming Digital Radiography, iCRco introduces the Long Bone iDR — Another first in digital imaging. The innovative Long Bone iDR changes how long bone imaging is done and eliminates the need for image stitching software. Long Bone iDR encapsulates a 14 x 52 plate that creates a full spine image in one exposure. Workflow is once again streamlined by reducing three separate X-rays to a single exposure, hence reducing dose and discomfort to the patient. Because the full image is taken in one shot, and image stitching is eliminated, iDR increases your productivity and throughput. By implementing iCRco solutions in your practice, you will instantly become part of the innovation.

**Simply put, Long Bone iDR will change how you “image” the future.**



# REVELATION



## VertX™

With years of inspiration comes the VertX. It is the only CR to withstand vigorous military environmental testing, ranging from below 0° freezing temperatures to over 120° desert heat without any degradation to image quality. VertX was designed with “tough” in mind. It is a true portable CR, weighing only 55 lbs., and it is deployed to American soldiers on the front lines. iCRco is the chosen solution provider for the US Army due to the superior quality and durability the Vertx demonstrated over all other competitors. The VertX serves as a testament to the quality iCRco promises and considers its core competency.

## Quick Facts:

- *iCRco CR equipment is the only product in the market that can be mobile, fixed in a Rad Room, or even mounted on a wall; allowing you to use every inch of valuable office space.*
- *98% of all parts used in iCRco machines are recyclable.*
- *iCRco is the only manufacturer to offer 2 Year Hardware and 3 Year Plate warranty in the United States.*

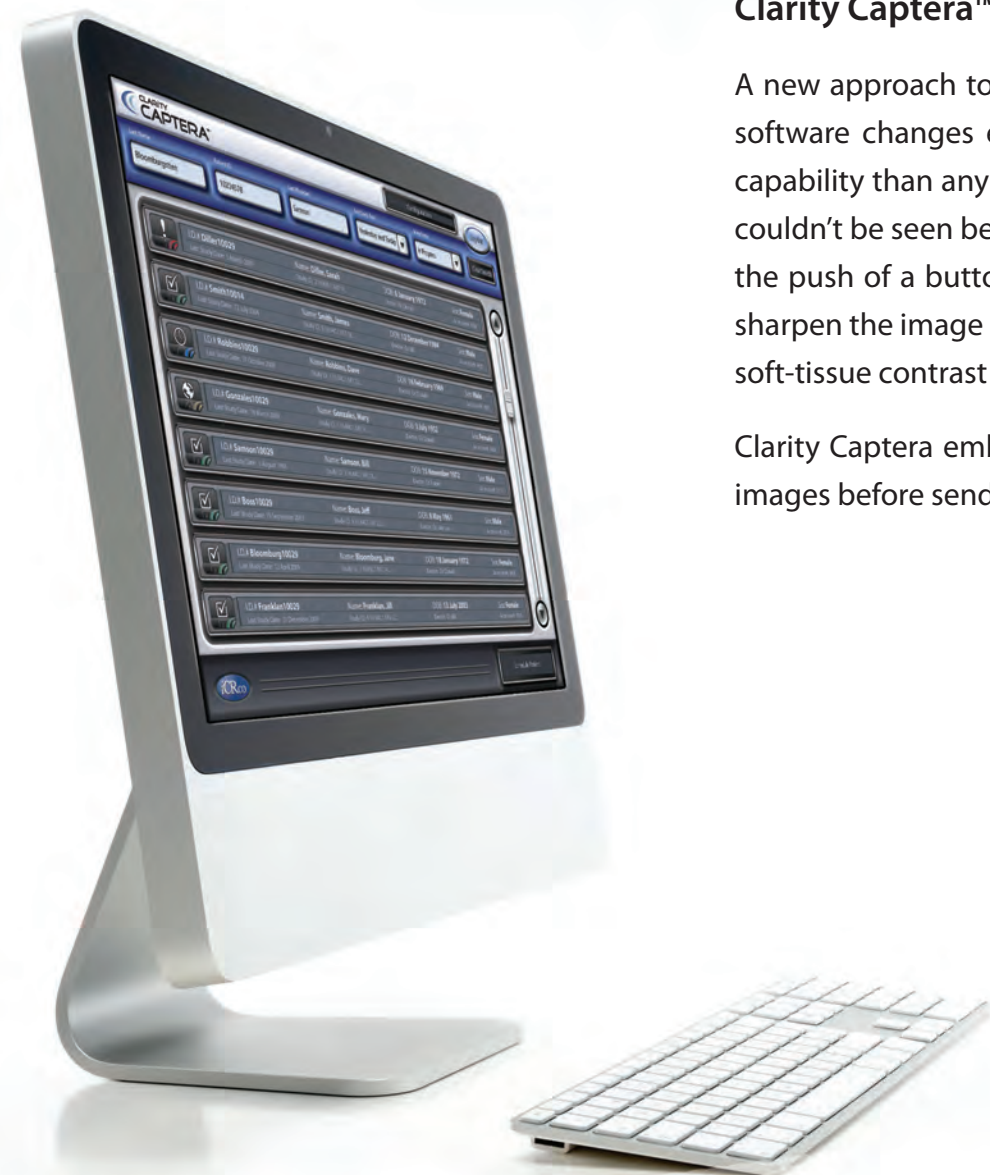


# MOBILITY

- Robust
- Daring
- Heroic



# IMAGE YOUR FUTURE



## Clarity Captera™: Evolution in Image Acquisition & Management

A new approach to image acquisition and management has arrived. This touch screen capable, intuitive software changes everything. With 18 years in the making, Clarity Captera delivers more options and capability than any other imaging software. An embedded ICE-2 module allows the physician to see what couldn't be seen before on X-ray images. This superior processing module enhances the image clarity with the push of a button. Acquired images are presented in the standard mode with the ability to soften or sharpen the image depending on the physician's preference. ICE-2 enhances visualization of fine detail and soft-tissue contrast while optimizing compensation for thick body parts like never before.

Clarity Captera embodies the ability to control the Rad Room and allows the technologist to manipulate images before sending it to iCRco's Clarity PACS™, making this acquisition software second to none!

### Why Clarity Captera?

- User friendly touch screen interface
- Fast and superior image processing
- DICOM send options to multiple AE titles
- Filter studies by smart search and sort options
- Instantly soften or sharpen images using ICE-2
- Ability to integrate with front office management systems like EMR and RIS
- Multiple annotation tools including window level, zoom, measurement tools, and smart smoothing



# PEACE OF MIND

## The Future of Picture Archiving and Communication is at iCRco

**CLARITY PACS™**  
PACS MADE CLEAR

Being a full vertically integrated company at iCRco, we developed Clarity PACS™ as part of our complete solution. Clarity PACS is a scalable and an affordable PACS solution, designed to optimize data management and simplify the image viewing process. It is DICOM 3.0 and HL7 compliant, and can be easily integrated with your existing front office software systems. Scalable Clarity PACS systems can support practices as small as a single physician's office, or as large as a hospital. Fully Web-enabled, you can now view a study from anywhere in the world with Clarity PACS.

Our in-house software team allows us to be responsive, fast, and efficient when implementing new technologies. We have eliminated third party involvement in our product development to offer you the most competitively priced solutions. At iCRco, we are committed to bringing you the most advanced turn-key solutions at affordable prices when converting to digital.

- Fully Web-enabled PACS
- Very affordable
- Ease-of-use improves workflow & productivity
- Easy to maintain and upgrade
- High reliability and uptime
- Interoperability with other information systems
- Multi-modality support

Clarity PACS is the complete solution for your current and future digital image archiving and management needs.



# SEE

"At Immedicenter, we have decided to convert to digital from conventional film because we couldn't afford not to. We realize in today's imaging environment that going digital would save us money, have a more efficient workflow and more importantly, allow us to stay competitive. The ability to send/receive images via DICOM, ability to QA images, the built-in archiving solutions, and even printing in a DICOM environment provided by iCRco, convinced us that iCRco solutions would provide the true low cost of ownership for our facilities while improving patient care."

*Doloris Giampapa  
Head of Radiology  
Immedicenter Clifton*

"ICE-2 automatically enhances the visualization of bone and soft tissue details, which significantly improves image quality and clinical workflow in a busy practice."

*Dr. Crandon Clark, M.D.  
Board Certified Radiologist*

"My experience has been great with iCRco. From the beginning to the end, they answered my questions and concerns. I have been using the iCRco machine for a while and it improved the efficiency and the quality of the care we provide dramatically here at Harmon Memorial Hospital."

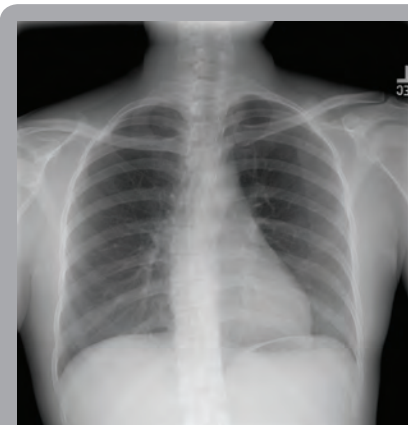
*Christine Davenport  
Harmon Memorial Hospital  
Radiology Department*



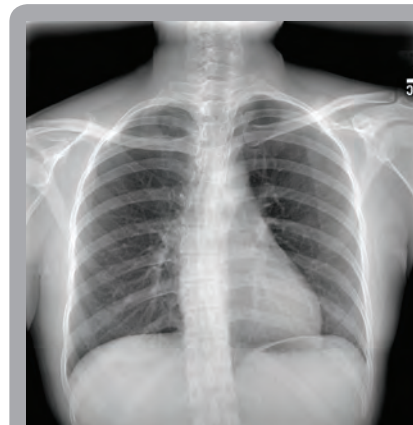
CONVENTIONAL



ICE-2



CONVENTIONAL



ICE-2

SEIZE THE **FUTURE**  
OF **MEDICAL IMAGING**  
WITH *iCRco*

[www.icrcompany.com](http://www.icrcompany.com)





[www.icrcompany.com](http://www.icrcompany.com)

2580 West 237<sup>th</sup> Street  
Torrance, CA 90505  
310.921.9559